

## ERRATA CORRIGE

G. ASTUTI, F. ROMA-MARZIO, D. DOLCI, L. GHILLANI, L. GUBELLINI, L. PERUZZI, *Numeri Cromosomici (1501 - 1502)*, Inform. Bot. Ital., 47(1): 61-64, 2015

ERRATA

CORRIGE

pag. 64

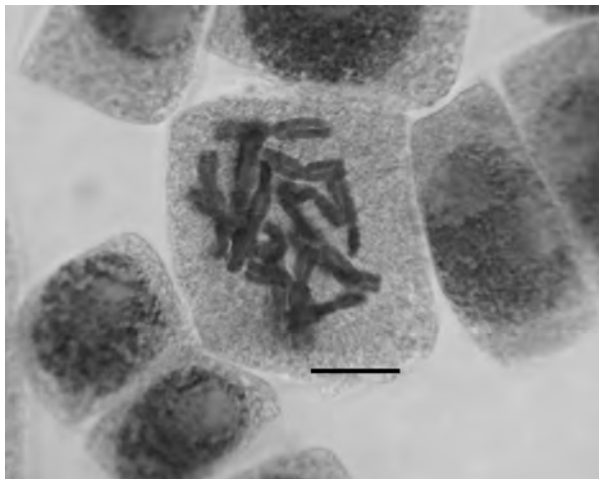


Fig. 2 – *Ornithogalum orthophyllum* Ten.,  $2n = 18$ . Barra: 10  $\mu\text{m}$ .

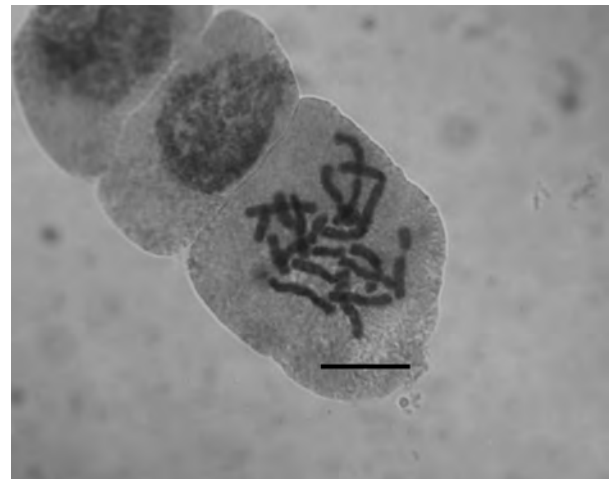


Fig. 2 – *Ornithogalum orthophyllum* Ten.,  $2n = 18$ . Barra: 10  $\mu\text{m}$ .